



Nissan and Formula E top 10 facts

Nissan's core belief since its founding has been "Dare to do what others don't." As the world's first company to mass-market electric vehicles and the only Japanese automaker in the all-electric FIA Formula E World Championship, Nissan has been consistently pushing the boundaries in the development of EV technology. Our customers worldwide are reaping the benefits of these advancements.

Check out the following electrifying facts about Formula E and Nissan's race team as it gears up for Japan's first Formula E race in March:



1. Tokyo E-Prix: Formula E's inaugural Japan race

The streets surrounding the Tokyo Big Sight exhibition center on March 30 will host the fastest, lightest and most technologically advanced cars in all-electric motorsports. The 2.6 km street circuit features 18 challenging turns and high-speed straights. Up to 20,000 fans will watch the action unfold against the backdrop of the stunning Tokyo skyline.

2. The race: All in a day

Formula E races are renowned for their fast-paced format. The competition is held on temporary street circuits, with practice, qualifying and races all taking place on the same day. Because there's so little margin for error, technological prowess, preparation and driving skill are the keys to success. Along with the thrilling action, spectators can enjoy food, live music and games at the fan festival.

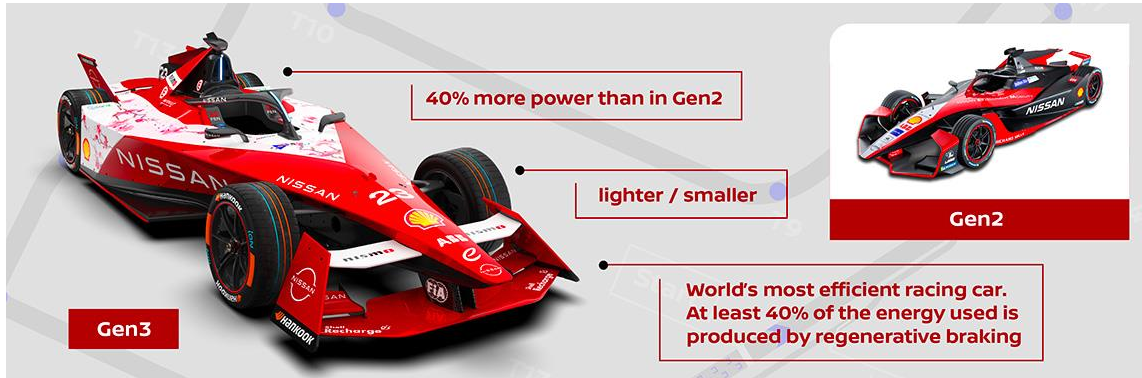
Nissan Motor (Thailand) Co., Ltd.

3 Rajanakarn Building, 27th Floor, South Sathorn Road, Yannawa, Sathorn, Bangkok 10120 Thailand



3. Nissan: Japan's only automaker in Formula E

Determined to showcase its cutting-edge EV technology before a global audience, Nissan made its all-electric racing debut in Season 5 (2018/2019) of the ABB FIA Formula E World Championship. It's the first and only Japanese manufacturer to enter the series. The data and insight derived from the 16 billion kilometers driven by LEAF customers have played a key role in the design of our race technology. Meanwhile, the lessons learned on the racetrack are helping shape our next generation of road-going EVs



4. The car: Formula E Gen 3

Formula E's Gen 3 race cars are rear-wheel drive, but there is also a motor at the front for regeneration. At least 40% of the energy used within a race is created by regenerative braking, making the Gen 3s the world's most efficient racing cars. They generate 40% more power than their Gen 2 predecessors and have a maximum output of 350 kW and a top speed of 322 km/h. They're also lighter and smaller than Gen2 cars, enabling faster and more agile wheel-to-wheel racing.

5. The livery: Embracing our Japanese heritage and more

Nissan Motor (Thailand) Co., Ltd.

3 Rajanakarn Building, 27th Floor, South Sathorn Road, Yannawa, Sathorn, Bangkok 10120 Thailand



The Nissan race car's cherry blossom livery is both a nod to the team's Japanese heritage and the bold new beginning represented by EV technology. But the decision to feature Japan's iconic flower once again for Season 10 goes beyond a design choice. There simply couldn't be a better choice for Nissan's first Formula E home race in front of its fans.



6. The drivers: Oliver Rowland and Sacha Fenestraz

Sacha Fenestraz, a fan of Japanese culture, claimed the pole position and the fastest ever Formula E lap at the Cape Town E-Prix in just his fifth race with the team. Oliver Rowland joined the team as a rookie in 2018, the same year Nissan made its Formula E debut. He's taken six pole positions and six podiums with Nissan, including a 2020 victory in Berlin. The two drivers collaborate on strategy and support each other off the track, while pushing each other to the limit in races.

7. Strategy: Formula E is a power play

With decades-long expertise in electrified powertrains, Nissan leverages its extensive know-how to enhance the performance of its racing EVs. All Gen3 Formula E vehicles use a common battery and have a maximum power of 350 kW. What sets Formula E apart from other motorsports is the role played by strategic energy management. Each driver navigates the track with a blend of race strategy and split-second decisions on power allocation, which ultimately determines the winner.

Nissan Motor (Thailand) Co., Ltd.

3 Rajanakarn Building, 27th Floor, South Sathorn Road, Yannawa, Sathorn, Bangkok 10120 Thailand

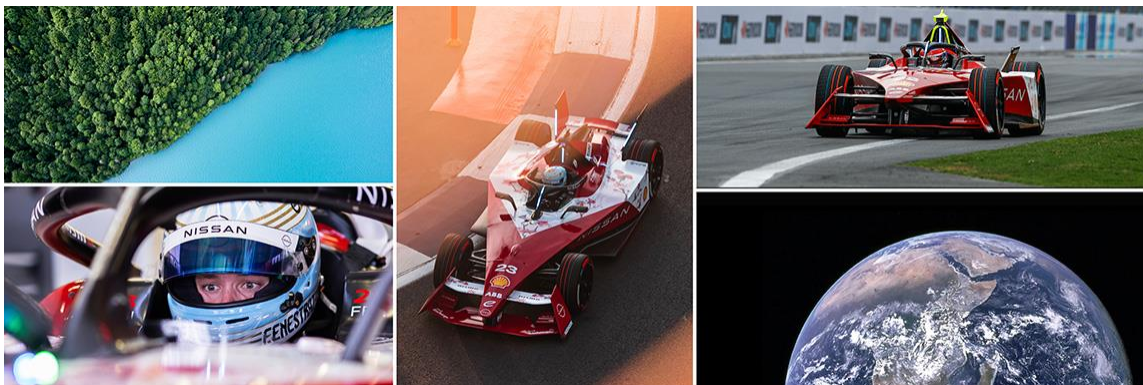


8. Sound: All the excitement without the deafening noise

Formula E racers' futuristic sound is about 80 decibels, just 10 more than the average road car. This low noise level enables Formula E races to be held closer to city centers and attract larger audiences. It's an event the entire family can enjoy. Formula E is also playing a role in educating drivers about the exciting performance of EVs. People are increasingly realizing that EVs are not only practical, efficient and great for the environment, but also loads of fun to drive.

9. Minds matter: Brain to Performance program

Like other motorsports, Formula E places a premium on drivers' decision-making, quick reaction times and resilience to stress and fatigue. Nissan's Brain to Performance program utilizes state-of-the-art brain imaging and analysis to identify the unique anatomical characteristics of professional race drivers' brains. Through brain mapping, a customized driver training program is then crafted to optimize their cerebral performance.



10. The environment: Racing toward a more sustainable future

Nissan Motor (Thailand) Co., Ltd.

3 Rajanakarn Building, 27th Floor, South Sathorn Road, Yannawa, Sathorn, Bangkok 10120 Thailand



Formula E is the world's only all-electric single-seater FIA World Championship and the first global sport to be certified with a net zero carbon footprint. Nissan and other participants are delivering innovative and exhilarating driving experiences through a commitment to zero-emission solutions and sustainable practices.

Beyond winning races, Nissan sees Formula E as an ideal platform to share its decades of expertise in electrification and to reinforce its commitment to sustainability.

Now buckle up and stay tuned for the next installment on Nissan Formula E fun facts.

###

For more information about our products, services and commitment to sustainable mobility, visit nissan-global.com. You can also follow us on [Facebook](#), [Instagram](#), [Twitter](#) and [LinkedIn](#) and see all our latest videos on [YouTube](#).

For more information, please contact:

Nissan Motor (Thailand) Co., Ltd. – Communications Department

Tel +66 (0) 2339 3400 Ext. 4113-4114 / Fax +66 (0) 2253 1022 www.nissan.co.th

Fleishman Hillard Thailand Tel +66 (0) 85 953 3330

Nissan Motor (Thailand) Co., Ltd.

3 Rajanakarn Building, 27th Floor, South Sathorn Road, Yannawa, Sathorn, Bangkok 10120 Thailand